



**Legend**

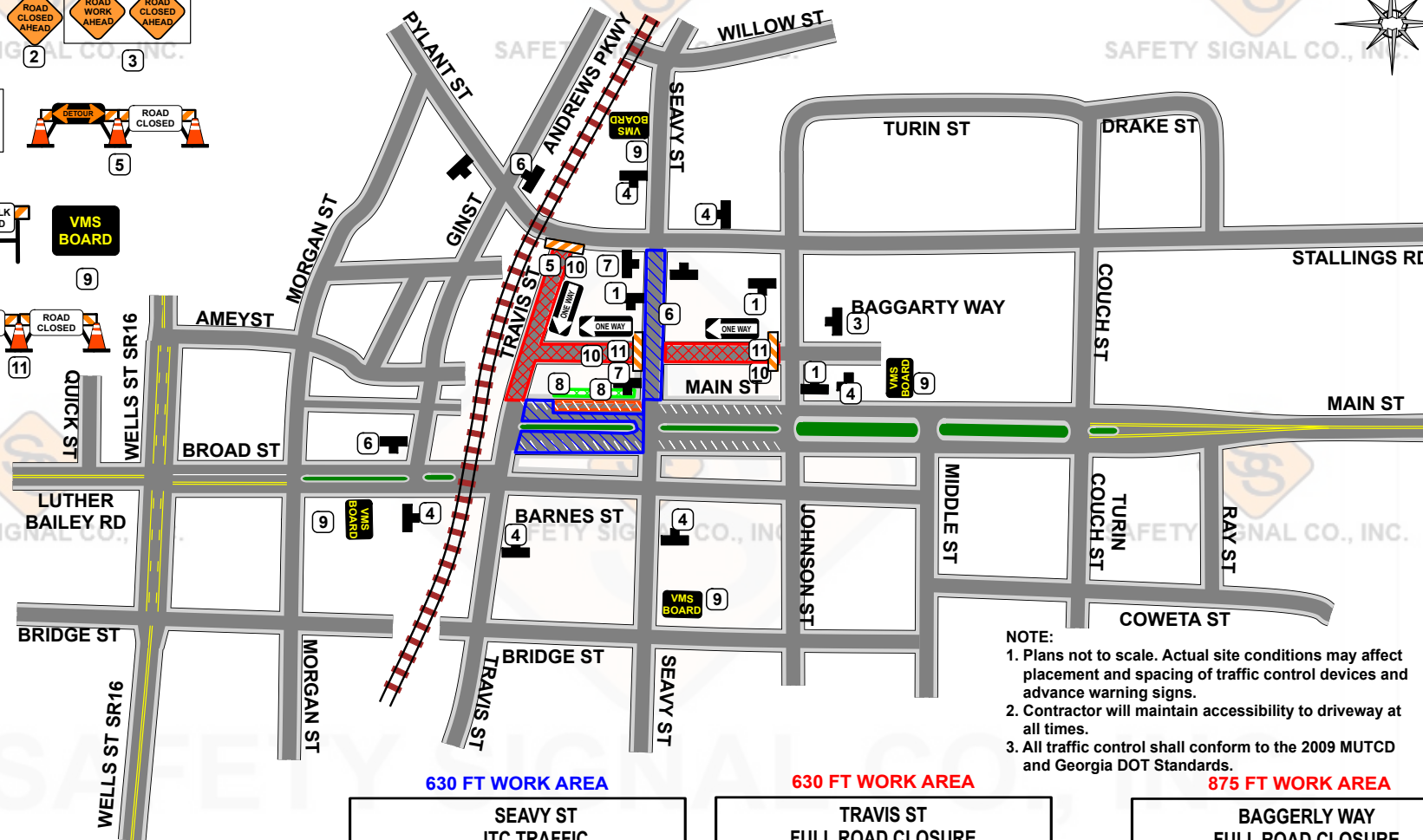
- Full Road Closure
- ITC Traffic
- Parking Lane Closure
- Sidewalk Closure

1 2 3

4 5

6 7 8 9

10



**NOTE:**  
 1. Plans not to scale. Actual site conditions may affect placement and spacing of traffic control devices and advance warning signs.  
 2. Contractor will maintain accessibility to driveway at all times.  
 3. All traffic control shall conform to the 2009 MUTCD and Georgia DOT Standards.

**630 FT WORK AREA**  
 MAIN ST  
 ITC TRAFFIC  
 BETWEEN GIN ST  
 AND SEAVY ST


**630 FT WORK AREA**  
 SEAVY ST  
 ITC TRAFFIC  
 BETWEEN PYLANT ST  
 AND MAIN ST

**410 FT WORK AREA**  
 MAIN ST - EAST CURB  
 SIDEWALK AND PARKING LANE CLOSURE  
 BETWEEN TRAVIS ST  
 AND 33 MAIN ST

**630 FT WORK AREA**  
 TRAVIS ST  
 FULL ROAD CLOSURE  
 BETWEEN PYLANT ST  
 AND MAIN ST

STALWART FILMS, LLC  
 "THE WALKING DEAD" SEASON 11  
 600 Chestlehurst Rd  
 Senoia, Georgia 30276  
 OFFICE: 678-723-0230 FAX: 678-723-1001

**875 FT WORK AREA**  
 BAGGERLY WAY  
 FULL ROAD CLOSURE  
 BETWEEN JOHNSON ST  
 AND TRAVIS ST

 SAFETY SIGNAL CO., INC.  
 P.O. BOX 488  
 UNION CITY, GEORGIA 30291  
 OFFICE: 770-964-3181  
 Drawn by: CT White Date: 07-15-21