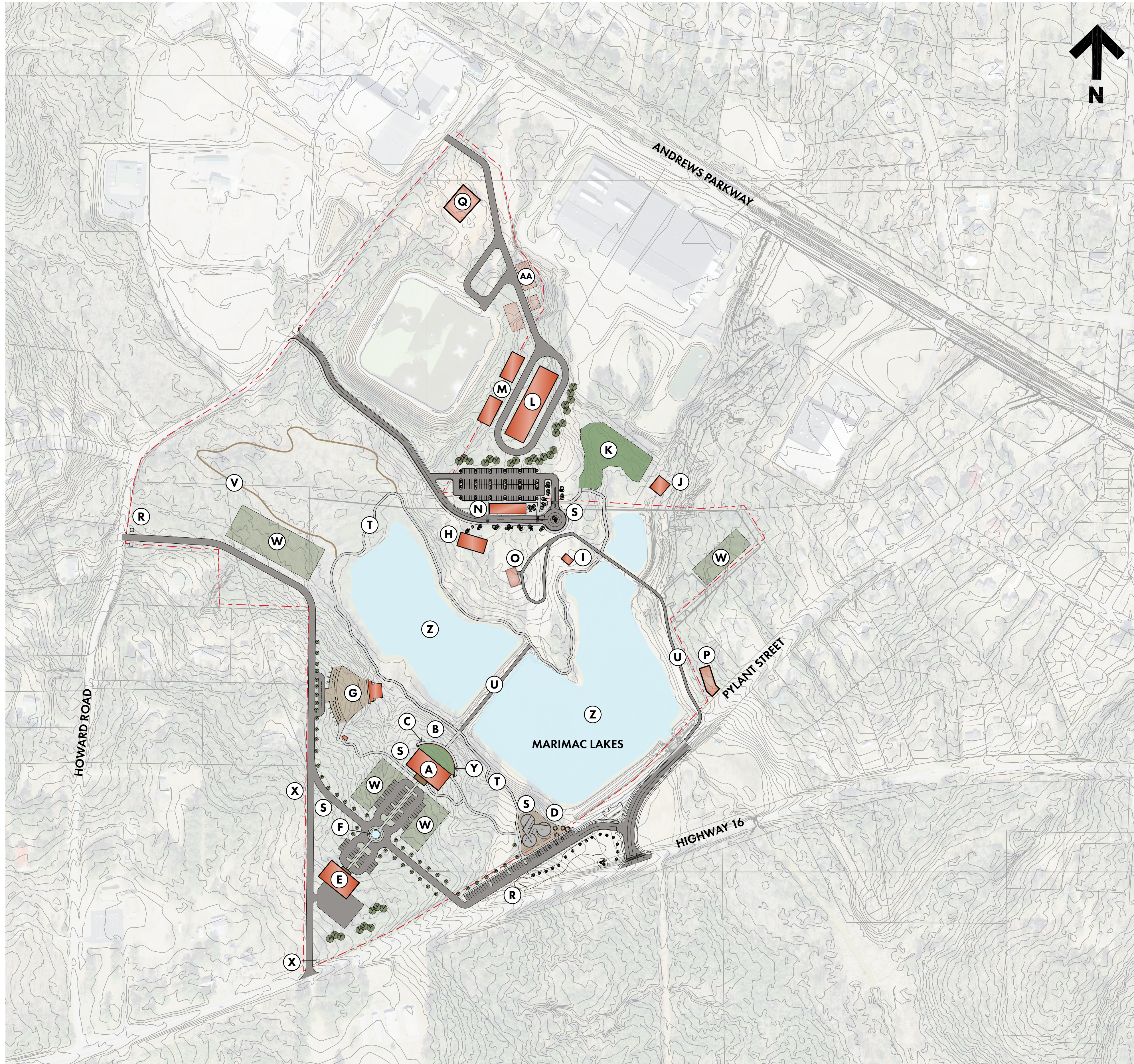


LEGEND _

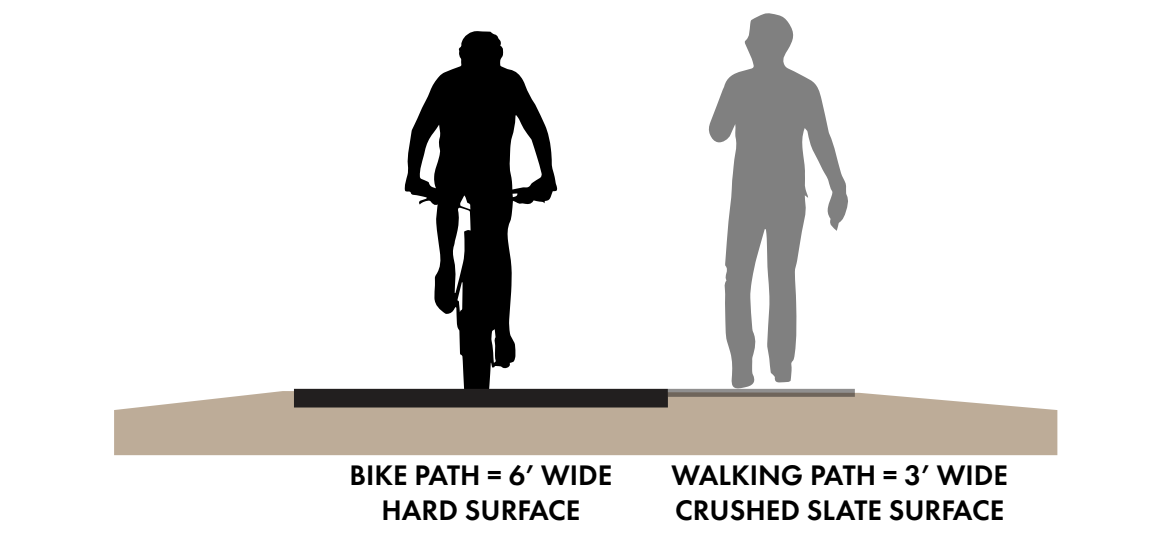
- (A)** CITY HALL
_ +/- 30,000 SF (3 FLOORS)
_ 44 SPACE PARKING LOT
- (B)** MUNICIPAL LAWN
_ LAWN FOR OUTDOOR ACTIVITIES OVERLOOKING MARIMAC LAKES
- (C)** MONUMENT STAIR
_ STAIR CONNECTING GREAT LAWN AND WALKING TRAIL
_ +/- 25'-0" ELEVATION CHANGE
- (D)** VETERANS MEMORIAL
_ OUTDOOR EXPERIENTIAL MEMORIAL
_ 25 SPACE NEW PARKING LOT, CONNECTED TO EXISTING PARKING LOT
- (E)** POLICE STATION
_ +/- 11,250 SF
_ 20 SPACE PARKING LOT, WITH SIDEWALK CONNECTION TO CITY HALL
_ BACK PARKING LOT WITH SINGLE GATE ACCESS TO REAR ROADWAY
- (F)** WATER FEATURE
_ MUNICIPAL COMPLEX WATER FEATURE
- (G)** AMPHITHEATER
_ +/- 2,000 SEAT AMPHITHEATER
_ VIP/ADA DROP OFF AREA CONNECTED TO NEW ROAD
- (H)** EVENT CENTER
_ +/- 5,000 SF STRUCTURE OVERLOOKING MARIMAC LAKES
_ 100 SPACE PARKING LOT ACROSS NEW ROAD FOR VENUE
_ LAWN SPACE ADJACENT FOR OUTDOOR ACTIVITIES
- (I)** SMALL PAVILION
_ +/- 1,000 SF PAVILION
_ SUPPORTS EVENT CENTER
- (J)** LARGE PAVILION
_ +/- 2,500SF PAVILION
_ ANCHORS VIEW FROM CITY HALL OVER MARIMAC LAKES
- (K)** DOG PARK
_ +/- 1 ACRE FENCED DOG PARK
- (L)** PUBLIC WORKS BUILDING
_ +/- 11,250 SF STRUCTURE FOR PUBLIC WORKS
_ ACCESS ROADS ALLOW TRAFFIC LOOP FOR EQUIPMENT
- (M)** PUBLIC WORKS POLE BARN
_ (2) 5,000 SF OPEN AIR POLE BARN SUPPORTING PUBLIC WORKS NEEDS
- (N)** RESTROOM AND SUPPORT STRUCTURE
_ PUBLIC RESTROOM BANK WITH WALKING TRAIL SUPPORT FACILITIES
- (O)** STONE LODGE
_ EXISTING STONE LODGE FACILITY
- (P)** LIBRARY
_ EXISTING LIBRARY LOCATION
- (Q)** EXISTING POLICE STATION
_ EXISTING POLICE STATION LOCATION, POSSIBLY NEW PUBLIC WORKS
- (R)** MONUMENT SIGNAGE
_ MONUMENT SIGN FOR MUNICIPAL COMPLEX
- (S)** WAYFINDING SIGNAGE
_ WAYFINDING SIGNAGE TO NAVIGATE CITY CAMPUS
- (T)** WALKING TRAIL
_ AGGREGATE WALKING TRAIL
- (U)** CART PATH TRAIL
_ IMPERVIOUS SURFACE SUITABLE FOR GOLF CART ACCESS
- (V)** BOARDWALK NATURE TRAIL
_ BOARDWALK NATURE EXPERIENCE IN WETLAND AREA, ECOTOURISM
- (W)** FUTURE PARKING ZONES
_ AREAS FOR FUTURE PARKING EXPANSION
- (X)** GATED ENTRY
_ SECURE ENTRY AND EXIT FOR POLICE ONLY
- (Y)** STONE RETAINING WALL
_ RETAINING WALL BETWEEN MUNICIPAL LAWN AND WALKING TRAIL BELOW
- (Z)** LAKE WATER FEATURE
_ WATER FEATURE ADDS ACOUSTIC AND VISUAL ELEMENTS TO MARIMAC LAKES
- (AA)** FUTURE PUBLIC WORKS
_ SPACE FOR FUTURE PUBLIC WORKS STRUCTURES



MAIN ENTRANCE SIGNAGE EXAMPLE



WAYFINDING SIGNAGE EXAMPLE



WALKING TRAILS SECTION
NOT TO SCALE

- | SITE KEY _ | BUILDING KEY _ |
|--------------------|--------------------|
| PROPERTY LINE | NEW BUILDING |
| ROADS | EXISTING BUILDING |
| SIDEWALKS / TRAILS | NEW ROOF STRUCTURE |
| NATURE TRAIL | FUTURE BUILDING |
| STONE WALL | |
| PERVIOUS GRAVEL | |
| GREEN SPACE | |
| WATER | |