

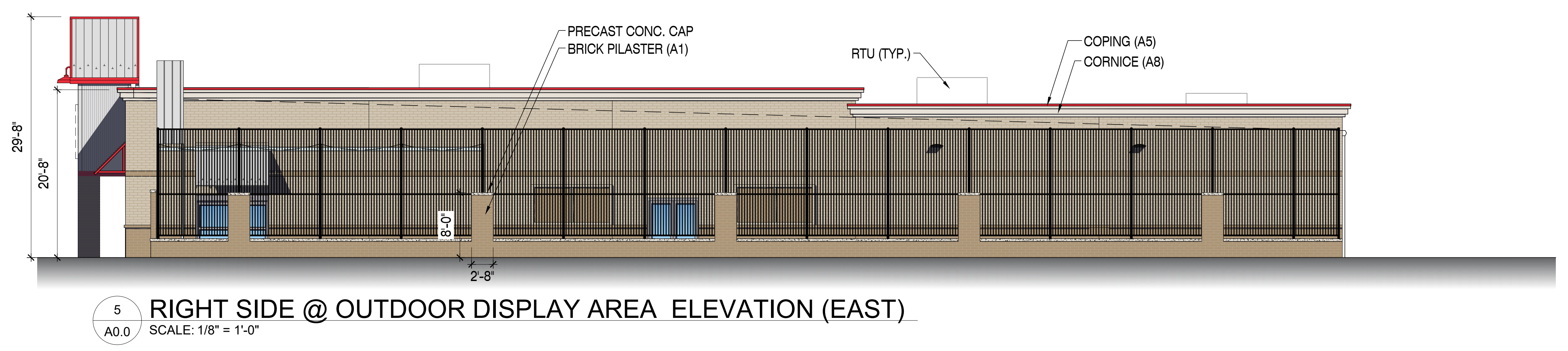
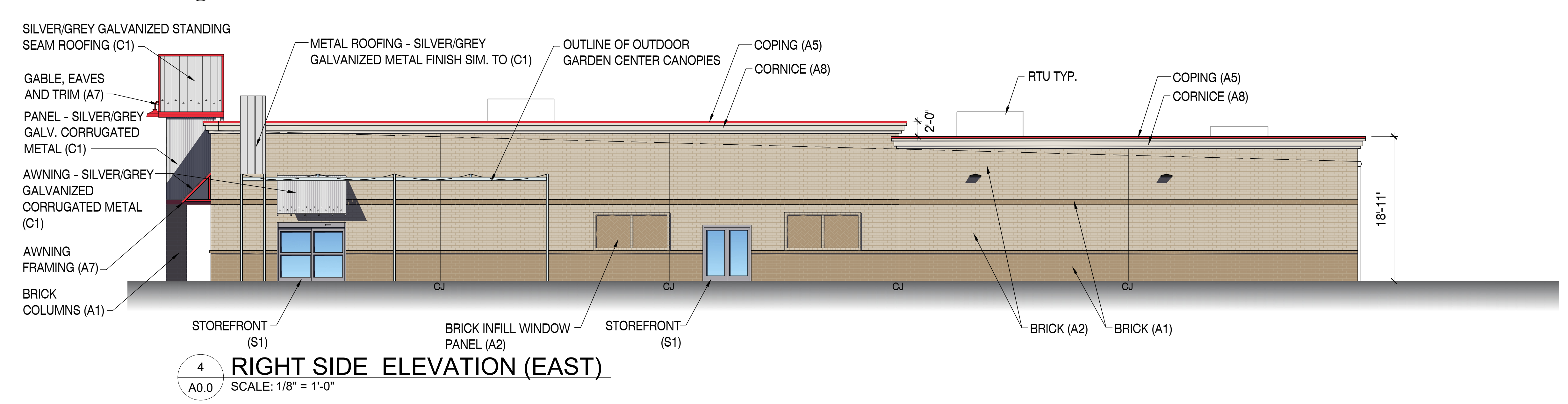
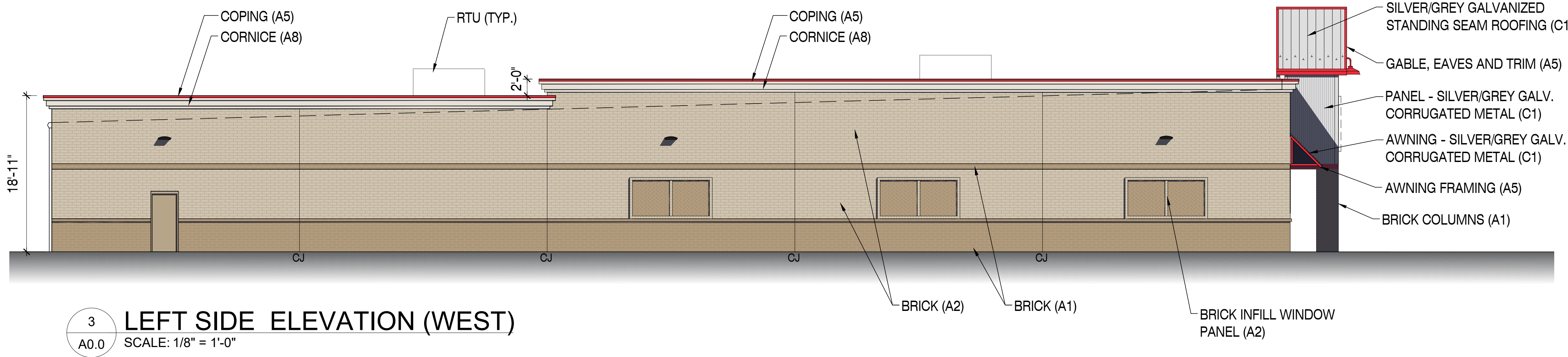
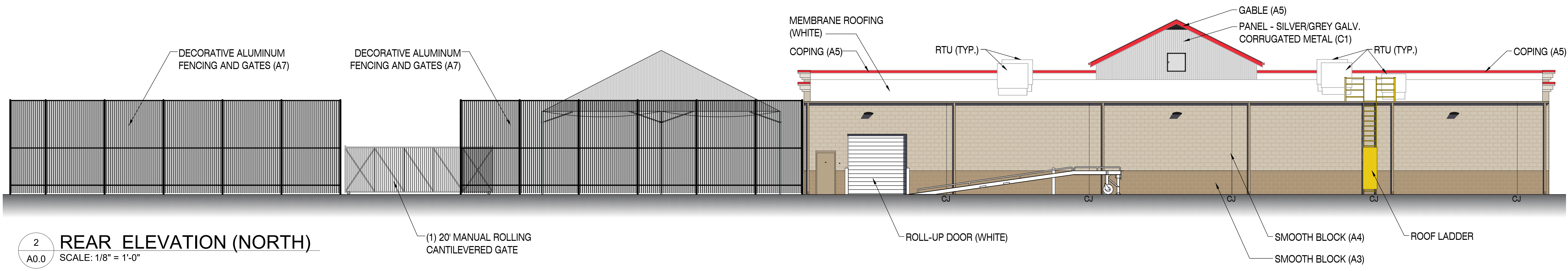
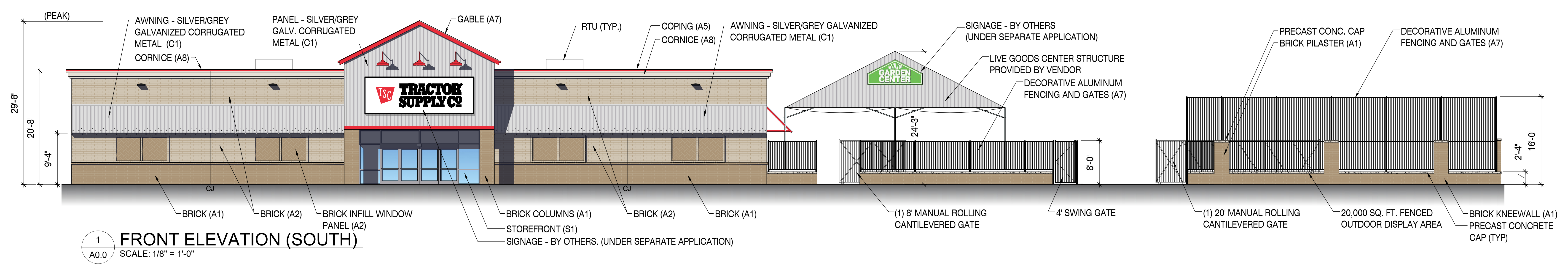
| REV. | REASON | DATE |
|------|--------|------|
| | | |
| | | |
| | | |
| | | |
| | | |
| | | |
| | | |
| | | |
| | | |
| | | |
| | | |
| | | |
| | | |
| | | |
| | | |

PROJECT EN CHARGE:
MM PROJECT MANAGER
JVB DESIGN TEAM

TRACTOR SUPPLY CO.
SENOIA VILLAGE
SENOIA, GA

121-20753-00

EXTERIOR ELEVATIONS



A1 - BRICK

A2 - BRICK

A4 - PAINT

A5 - PAINT

A3 - PAINT

C1 - CORR. MTL.

S1 - STOREFRONT

| MATERIAL SCHEDULE | | |
|-------------------|--------------------------------------|---|
| MATERIAL: | COLOR: | LOCATION: |
| A1 | FACE BRICK - DARK TAN | FRONT, LEFT & RIGHT SIDE EXTERIOR WALLS - WATER TABLE, ACCENT STRIPE, & BRICK INFILL PANELS |
| A2 | FACE BRICK - TAN | FRONT, LEFT, & RIGHT SIDE EXTERIOR WALLS - FIELD BRICK COLOR & BRICK INFILL PANEL BORDERS |
| A3 | SW - SANDERLING | ACCENT COLOR PAINT ON SMOOTH FACE CMU BLOCK - REAR ELEVATION |
| A4 | SW - URBAN PUTTY | PRIMARY COLOR PAINT ON SMOOTH FACE CMU BLOCK - REAR ELEVATION |
| A5 | SW - SAFETY RED | COPENING, ENTRY TOWER TRIM, AWNING FRAME |
| A6 | SW - PURE WHITE | ROLL-UP DOORS |
| A7 | PRE-FINISHED BLACK / ALUMINUM | OUTDOOR FENCING AND GATES |
| A8 | EIFS: MATCH (A4) SW - URBAN PUTTY | EIFS CORNICE - SANDPEBBLE FINE FINISH |
| C1 | GALVANIZED - SILVER/GREY MATT FINISH | CORRUGATED PANELS |
| S1 | CLEAR ANODIZED | STOREFRONT |