

EXTERIOR ELEVATION **Primary Facade: 163.7/1004=16%**  
1" = 10'-0"



EXTERIOR ELEVATION  
1" = 10'-0"

EXTERIOR ELEVATIONS

**ATTACHED CANOPY SCHEDULE**

Mark	Description	Count	Overall Width	Overall Depth	Tie Back Mounting (Offset From Top)	Integral Lighting
C1-A	Exterior Canopy	1	3'-8 1/2"	1'-0"	0"	Yes
C1-C	Exterior Canopy	10	6'-4"	1'-0"	0"	No
C3-B	Exterior Canopy	2	15'-0"	4'-0"	2'-4"	
C4-G	Exterior Canopy	1	7'-0"	4'-0"	2'-4"	Yes
Grand total		14				

**EXTERIOR FINISHES**



**SC-1**  
STUCCO SYSTEM  
COLOR: WHITE  
FINISH: SAND MEDIUM



**SC-2**  
STUCCO SYSTEM  
COLOR: BROWN  
FINISH: SAND MEDIUM



**BR-A**  
BRICK VENEER  
COLOR: DARK BROWN  
SIZE: MODULAR



**BR-B**  
BRICK VENEER  
COLOR: LIGHT BROWN  
SIZE: MODULAR



**EC-1**  
PREFINISHED METAL COPING  
COLOR: DARK BRONZE

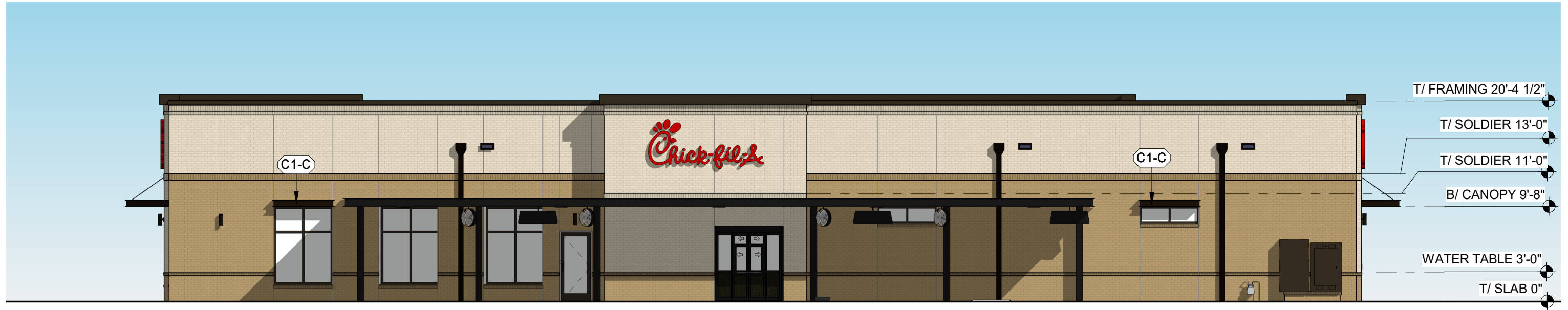


**PT-9**  
EXTERIOR PAINT  
COLOR: DARK BRONZE  
FINISH: SEMI-GLOSS



**ST-1**  
STOREFRONT  
COLOR: DARK BRONZE





EXTERIOR ELEVATION

1" = 10'-0"



EXTERIOR ELEVATION

Secondary Facade:  $266.69/2510=10.6\%$

1" = 10'-0"

EXTERIOR ELEVATIONS