

BR-1: BRICK VENEER - HENRY BRICK - "CHIMNEY ROCK"



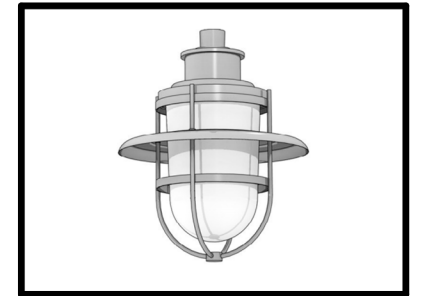
MV-1: MASONRY VENEER - INTEGRALLY COLORED SPLITFACE CMU - ADAMS PRODUCT - 4301



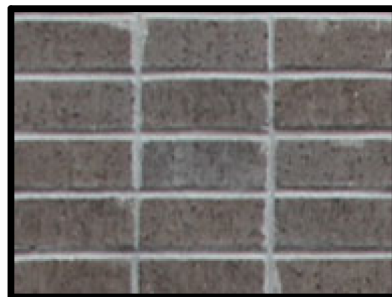
S-1: STUCCO FINISH SYSTEM - COLOR TO MATCH SHERWIN WILLIAMS - "SNOWBOUND" SW7004



AW-1: METAL CANOPY - COLOR TO MATCH PAC-CLAD "MATTE BLACK"



LT-1: DECORATIVE LIGHT SCONCE - ELA - UNION 13" COLOR: "BLACK-MIDNIGHT"



BR-2: BRICK VENEER - SOLDIER COURSE - CHEROKEE BRICK - "VELOUR BLACK"



SF-1: ALUMINUM STOREFRONT - CLEAR ANODIZED ALUMINUM



S-2: STUCCO FINISH SYSTEM - COLOR TO MATCH SHERWIN WILLIAMS - "KILIM BEIGE" SW6106



AW-2: METAL STANDING SEAM AWNING - COLOR TO MATCH PAC-CLAD "MATTE BLACK"

SCARBROUGH HOLDINGS

MATERIAL BOARD

THE SHOPS OF SENOIA
OP #5 - PROPOSED MEDICAL OFFICE BLDG.
SENSOIA, GA

06/21/21

