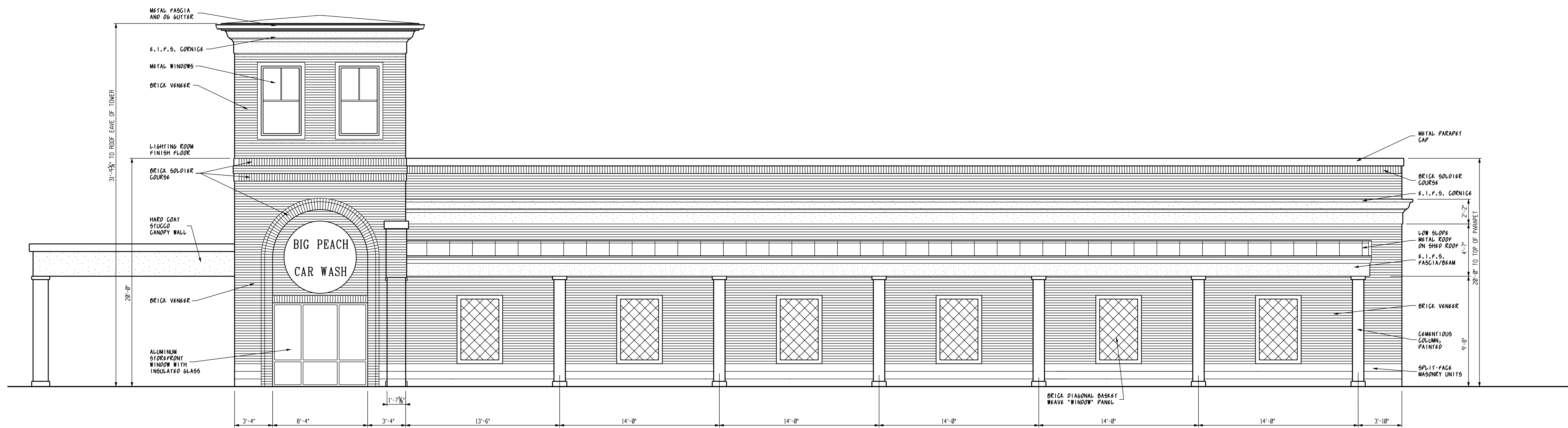


1 EAST ELEVATION SCALE: 1/4" = 1'-0"

TOTAL ELEVATION	2,290 S.F.	100%
WINDOWS, FALSE WINDOWS AND OPENINGS	307 S.F.	17%
B.I.F.S. AND CEMENTITIOUS MATERIAL	26 S.F.	1%
B.I.F.S. CORNICE	226 S.F.	10%



2 WEST ELEVATION SCALE: 1/4" = 1'-0"

TOTAL ELEVATION	2,290 S.F.	100%
WINDOWS, FALSE WINDOWS AND OPENINGS	267 S.F.	12%
B.I.F.S. AND CEMENTITIOUS MATERIAL	169 S.F.	7%
B.I.F.S. CORNICE	219 S.F.	10%

BIG PEACH CAR WASH
FOR
BIG PEACH PROPERTIES
TUCKER ROAD
SENOIA, GEORGIA 30276

DRAWN BY
RAD
CHECKED BY
RAD
DATE
9 - 15 - 23

ADAMS and DAY
ARCHITECTS, A.I.A., P.C.
216 ROSE HILL DRIVE, GEORGIA 31088
PHONE: (478) 745 - 1167
robert.day@cox.net

DRAWING NO.
A-2