

Front Doors
 6/8 x 6/8
 Double Doors
 Fiberglass 3/4 Light

8' x 6'0
Front Porch Addition
 Pressure Treated 2x10 Joist + Band
 Pressure Treated 6x6 Support Post (wrapped 1x10 Hardi.)
 Pressure Treated 5/4 Deck Boards
 Ceiling Joist 2x8 (4x8 Bead Board Ceiling)
 Rafters 2x6
 10" columns Hardi.
 Shingles 30 year Archid. to match
 Brick support's under columns
 Brick Pavers



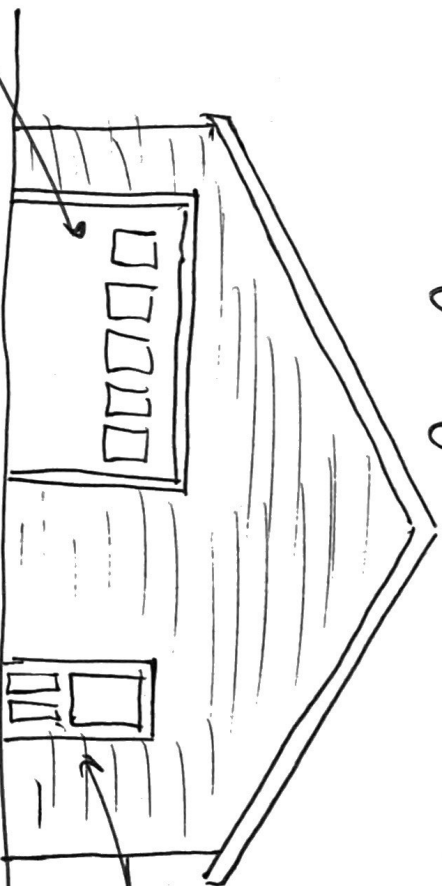
4. Add 3
new windows

5. move door
27" to left

3. Remove door +
add window to
match (remove stoop)

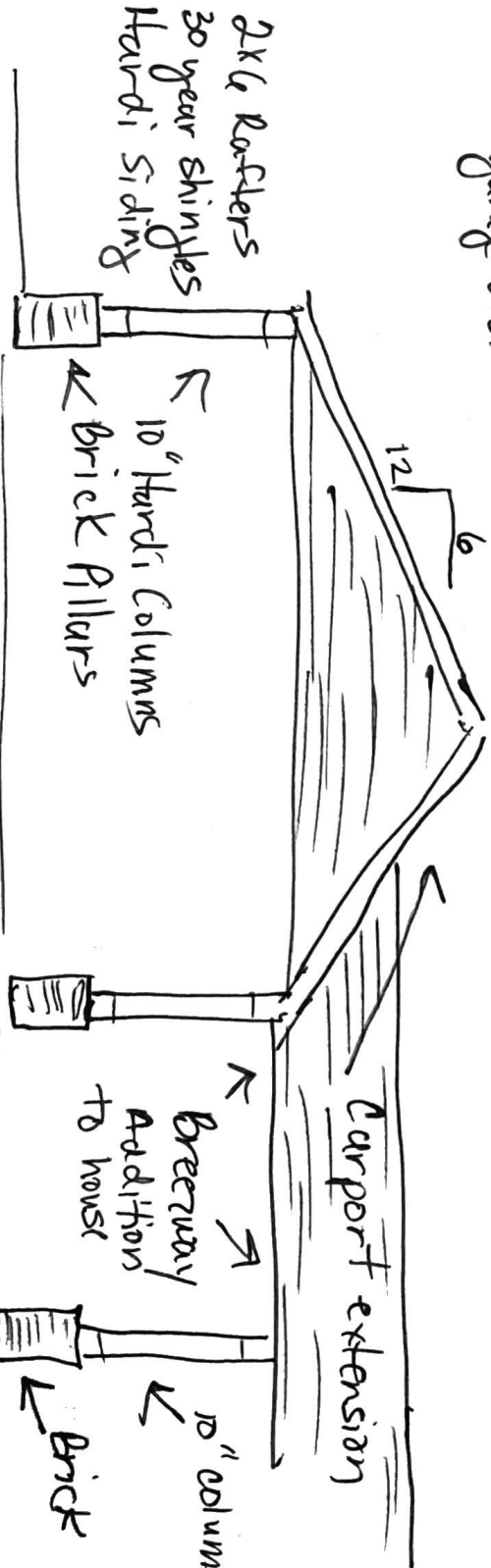
windows - wood DBL pane to match

Existing Garage



Close in garage door
+ add walk in door
+ Fiberglass 1/2 light

Add new aluminum
garage door



2x6 Rafters
30 year shingles
Hardi Siding

10" Hardi Columns
Brick Pillars

24'

Carport extension

Breezway
Addition
to house

10" columns
Brick