

202 Johnson Street COA Revision (original granted 9/12/22)

Changes:

1. Front door type - Eight panel changed to farmhouse.
2. Existing foundation appearance - Brick veneer piers added.
3. Garage gables - Hip gables changed to shed gables (east gable was made larger.)

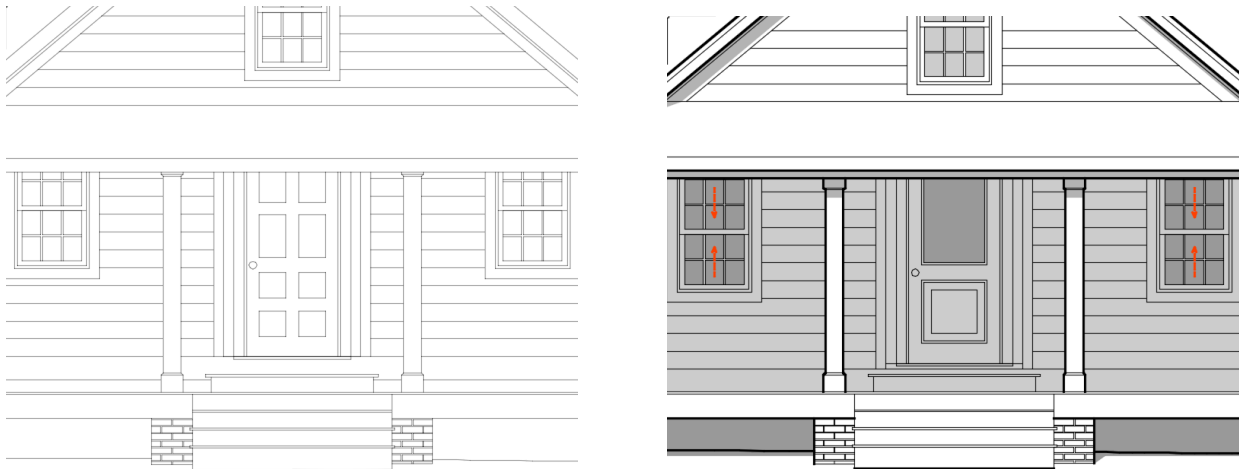
All elements are common throughout the fabric of the Senoia historic home design palette. None of the changes, singularly or in combination with one another, deviate from an aesthetic or appropriate historic design appearance approved in the existing COA. In general the changes were made to enhance the appearance of the final design or simplify construction.

Work completed on the 9/12/22 COA includes demolition of the metal accessory building and construction of the replacement:

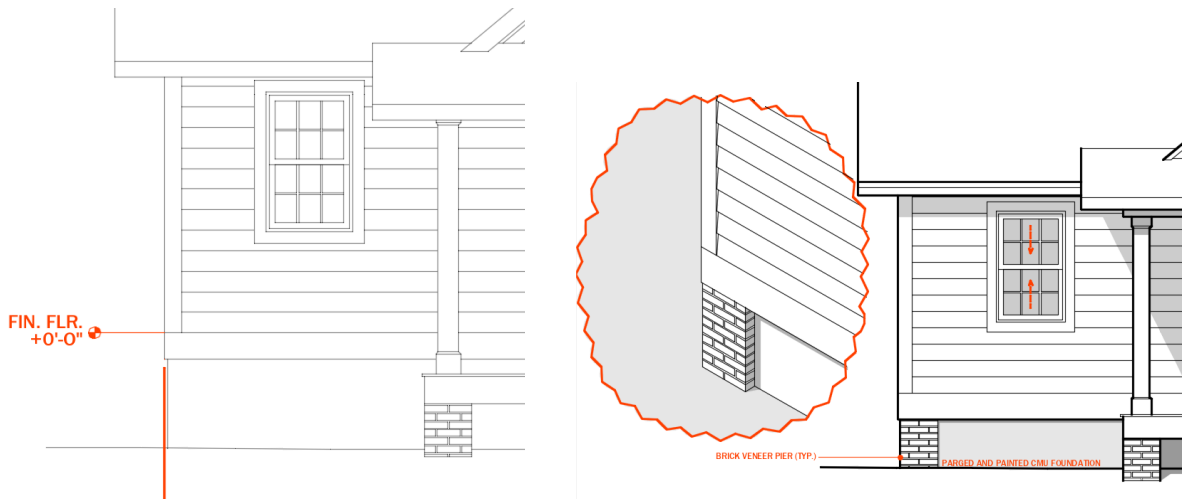


Explanation/Discussion of Changes:

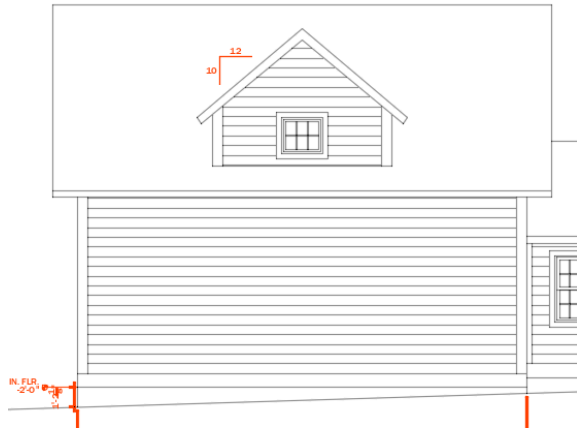
1. Front door - The decision to change from a solid eight panel door to a half glazed farmhouse door was purely aesthetic. The farmhouse door is very common throughout Senoia and lends itself to increasing natural light in the small entry.



2. Existing Foundation Appearance - Veneer brick piers were added to the existing concrete block crawl-space foundation to repeat the brick piers used in the new construction porch foundation. Once again, the decision was purely aesthetic and made to enhance the overall cohesiveness of the design. Per the existing COA, the concrete block that is visible will be parged and painted a deep terra cotta to match the new accessory building.

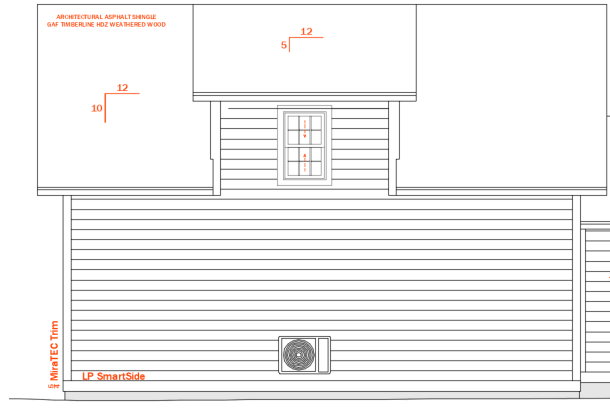


- Garage Gables - The garage gables were changed from hip to shed to simplify the construction when using the Structural Insulated Panel (SIP) system. Enlarging the east gable allowed for the addition of another window to increase daylight and a craft space for my wife.



Existing COA

WEST ELEVATION (facing Middle Street)

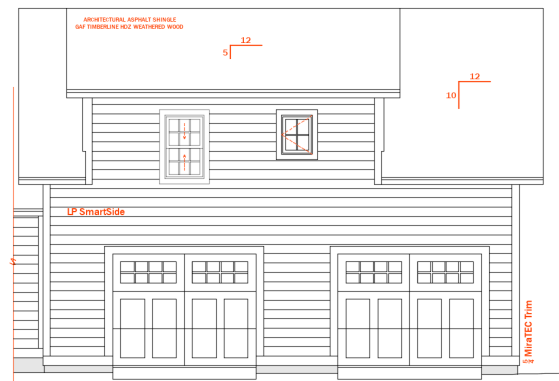


Revised



Existing COA

EAST ELEVATION (facing railroad tracks)



Revised

NORTH ELEVATION Revised

