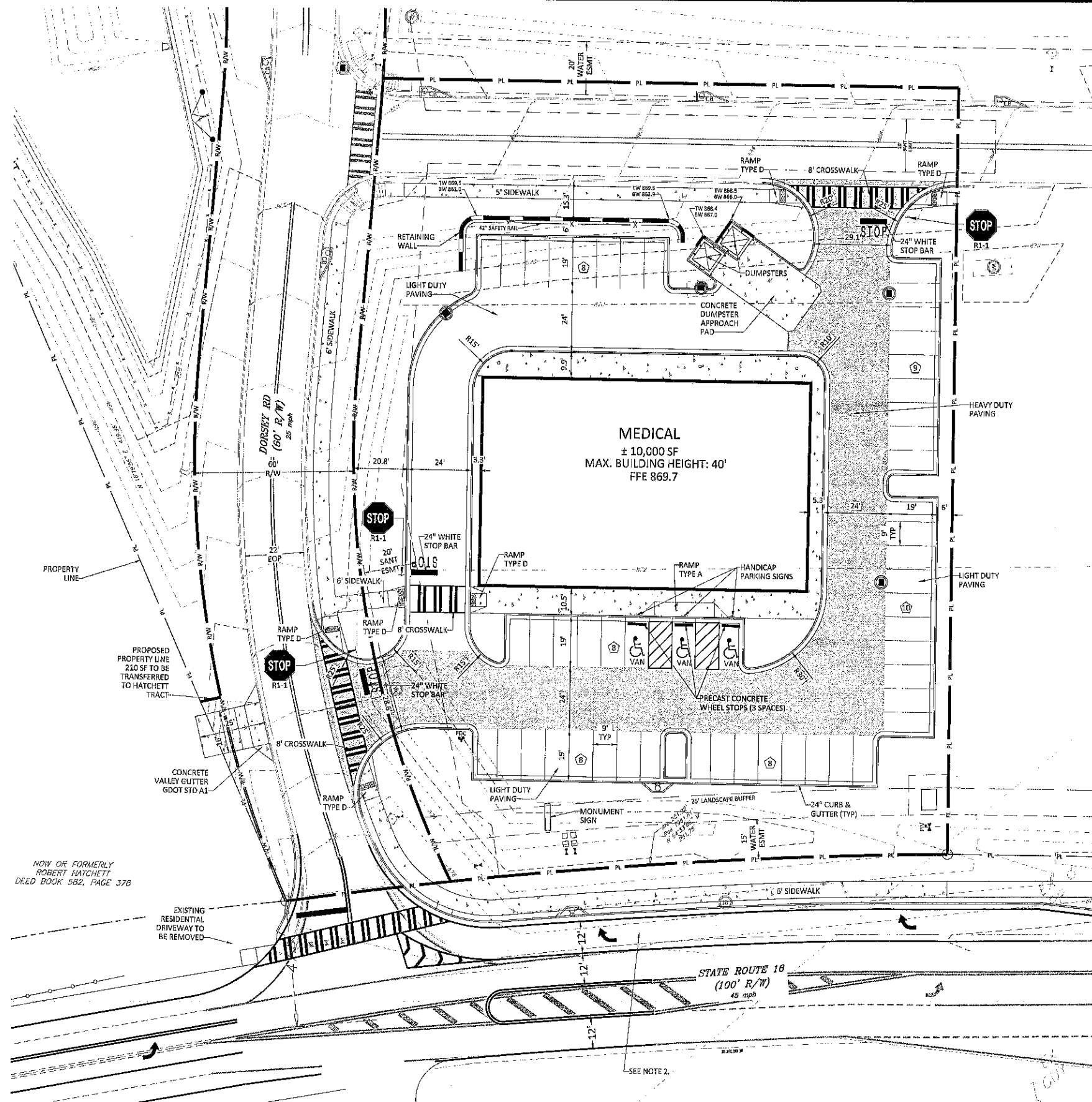


**NOTES:**

- 1) SEE ARCHITECTURAL DRAWINGS FOR CONSTRUCTION DETAILS FOR SIDEWALKS TOUCHING THE BUILDING.
- 2) SEE DRIVEWAY PLANS FOR IMPROVEMENTS IN THE SR 16 RIGHT OF WAYS.



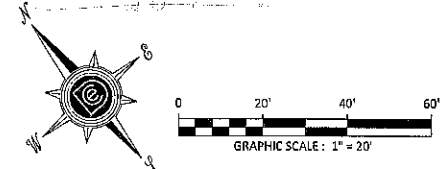
LEGEND		
EXISTING	DESCRIPTION	PROPOSED
	SANITARY SEWER MANHOLE	
	SANITARY CLEANOUT	
	GREASE TRAP	
	CATCH BASIN	
	JUNCTION BOX	
	WEIR INLET	
	DROP INLET	
	COMBINATION INLET	
	YARD INLET	
	FLOW ARROW	
	SIGN	
	POWER POLE	
	LIGHT POLE	
	TRANSFORMER	
	FIRE HYDRANT	
	FIRE DEPARTMENT CONNECTION	
	POST INDICATOR VALVE	
	THRUST BLOCK, REDUCER	
	YARD HYDRANT	
	WATER VALVE	
	WATER LINE	
	SANITARY SEWER PIPE	
	STORM DRAIN PIPE	
	GAS LINE	
	TELECOMMUNICATION LINE	
	POWER/ELECTRICAL LINE	
	UNDERGROUND POWER LINE	
	OVERHEAD POWER LINE	
	GUARDRAIL	
	HANDRAIL	
	FENCE	
	RETAINING WALL	
	PROPERTY LINE	
	RIGHT OF WAY	
	ELEVATION CONTOUR	
	LIMITS OF DISTURBANCE	

NOW OR FORMERLY ROBERT HATCHETT DRED BOOK 562, PAGE 378

EXISTING RESIDENTIAL DRIVEWAY TO BE REMOVED



24 Hr. Contact  
 Mr. Dan Tucker, 404-539-2124  
**Engineering Contact**  
 Mr. Emmanuel Dougerakis, 770-753-9800



**Site Plan**  
 DOULGERAKIS CONSULTING ENGINEERS, INC.  
 planning • civil engineering • sanitary engineering  
 400 Abbey Court, Alpharetta, Georgia 30004, phone: 770-753-9800

**Medical Office Building at Shops of Senoia**  
 LOCATED IN LAND LOT NO. 276, 280, AND 281, 1st DISTRICT, CITY OF SENOIA, CORNELL COUNTY, GEORGIA  
 OWNER: Shops of Senoia, LLC  
 DEVELOPER: Brent Holdings, LLC

THIS DRAWING IS THE PROPERTY OF DOULGERAKIS CONSULTING ENGINEERS, INC. AND IS NOT TO BE COPIED IN WHOLE OR IN PART. IT IS NOT TO BE REPRODUCED OR TRANSMITTED IN ANY FORM OR BY ANY MEANS, ELECTRONIC OR MECHANICAL, INCLUDING PHOTOCOPYING, RECORDING, OR BY ANY INFORMATION STORAGE AND RETRIEVAL SYSTEM. WITHOUT THE WRITTEN PERMISSION OF DOULGERAKIS CONSULTING ENGINEERS, INC.

NO.	DATE	REVISION

SCALE: 1" = 20'  
 DATE: 12-07-2020  
 JOB NO.: 1903  
 SHEET: C2.1

NOT FOR CONSTRUCTION