



5525 Interstate North Pkwy
Suite 200
Atlanta, GA 30328
404-965-1287 tel
404-601-9859 fax
cesinger@westside-engineering.com

LIGN
DESIGN ASSOCIATES
145 Church Street NE Suite 200
Atlanta, Georgia 30306
Phone: 404.424.4888
www.lignedesignassociates.com

WELLSTAR MEDICAL GROUP PROTOTYPE
MEDICAL OFFICE BUILDING
ADDRESS - 7970 WELLS ST. SENOIA, GA 30276



ISSUE	DATE	DESCRIPTION	INCLUDES
1	07/10/2022	100% CONSTRUCTION	POSS 1

REVISION	DATE	DESCRIPTION	REV
1	07/14/2022	INTERNAL COORDINATION	1
2		REVISION 2	2



DISCLAIMER:
ALL DRAWINGS FOR THIS PROJECT ARE THE PROPERTY OF ALIGN DESIGN ASSOCIATES, LLC. ANY REPRODUCTION OF THEM MAY ONLY BE USED BY THE OWNER TO CONDUCT AND OBTAIN THE PROJECT. THE DESIGN INDICATED ON THE DRAWINGS OR ANY OTHER PROJECTS OR PERFORM WITHOUT THE WRITTEN CONSENT OF ALIGN DESIGN ASSOCIATES, LLC. SCALED AS NOTED ON THE DRAWINGS ARE THE ORIGINAL DRAWINGS ONLY AS PRINTED FULL SCALE.

SHEET NAME:
SITE PLAN

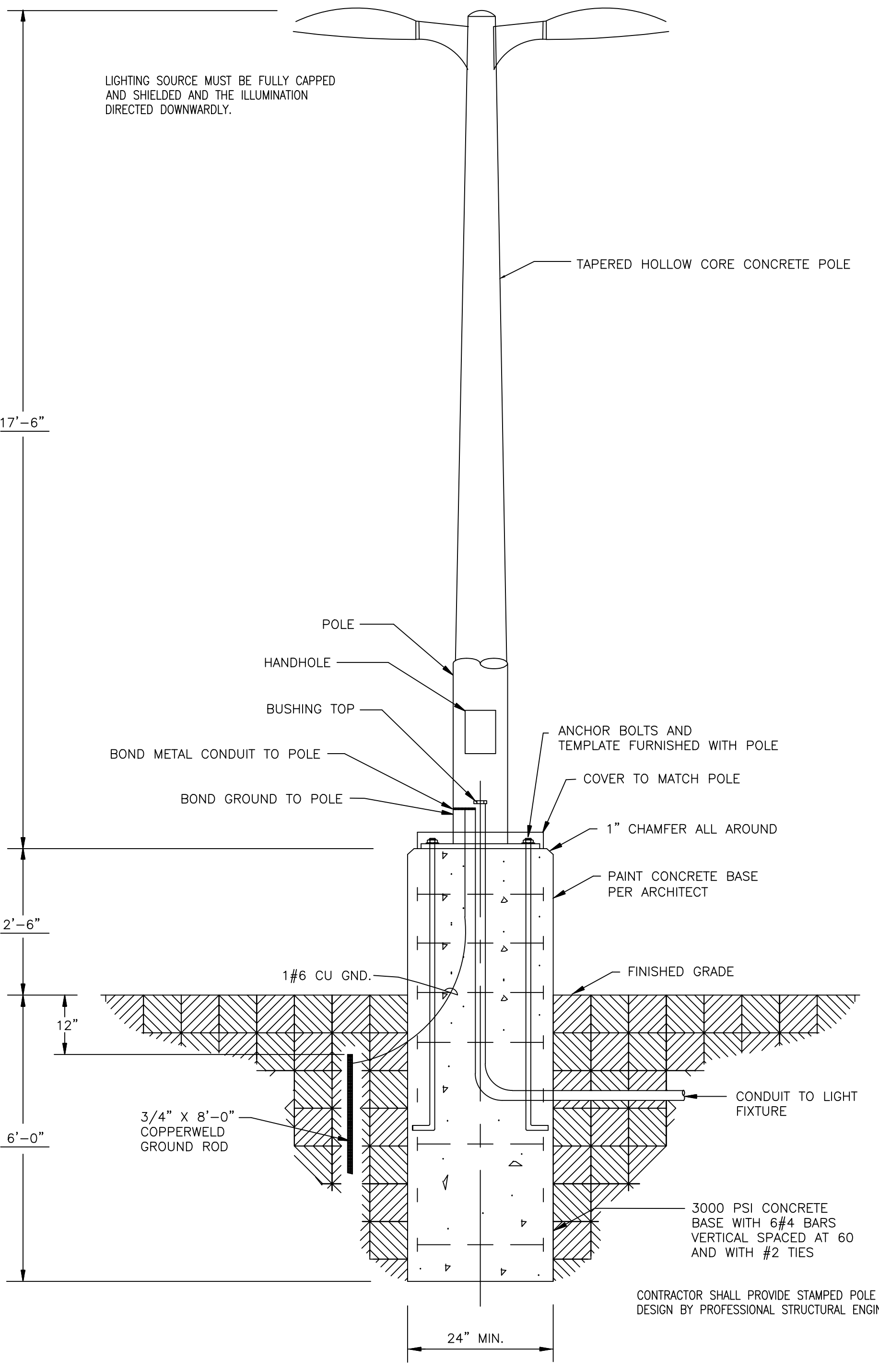
JOB NUMBER:
21204.00

E100

TYPE	DESCRIPTION	MOUNT	VOLTAGE	LAMP QTY	LAMP WATTAGE/TYPE	MANUFACTURER	CATALOG NUMBER	NOTES
SL1	SITE POLE LIGHTING; SINGLE HEAD, TYPE 3 DISTRIBUTION WITH HOUSING SHIELD, BLACK FINISH, 8,900 LUMENS	20'-0" POLE A.F.G.	120/277	-	70W LED 4000K	LITHONIA LIGHTING	DSX1-LED-P2-40K-T3M-MVOLT-HS	1
WC	EXTERIOR WALLPACK	WALL 10'-0" AFF	120/277	-	59W LED 4000K	LITHONIA LIGHTING	WDGE3-LED-P2-80CRI-R4-40K	
WS	DECORATIVE EXTERIOR WALL SCONCE, FINISH BY ARCHITECT, 1440 LUMENS	WALL 7'-0" AFF	120/277	-	9W LED 4000K	LITHONIA LIGHTING	OLLWD-LED-P1-40K-MVOLT-XX	

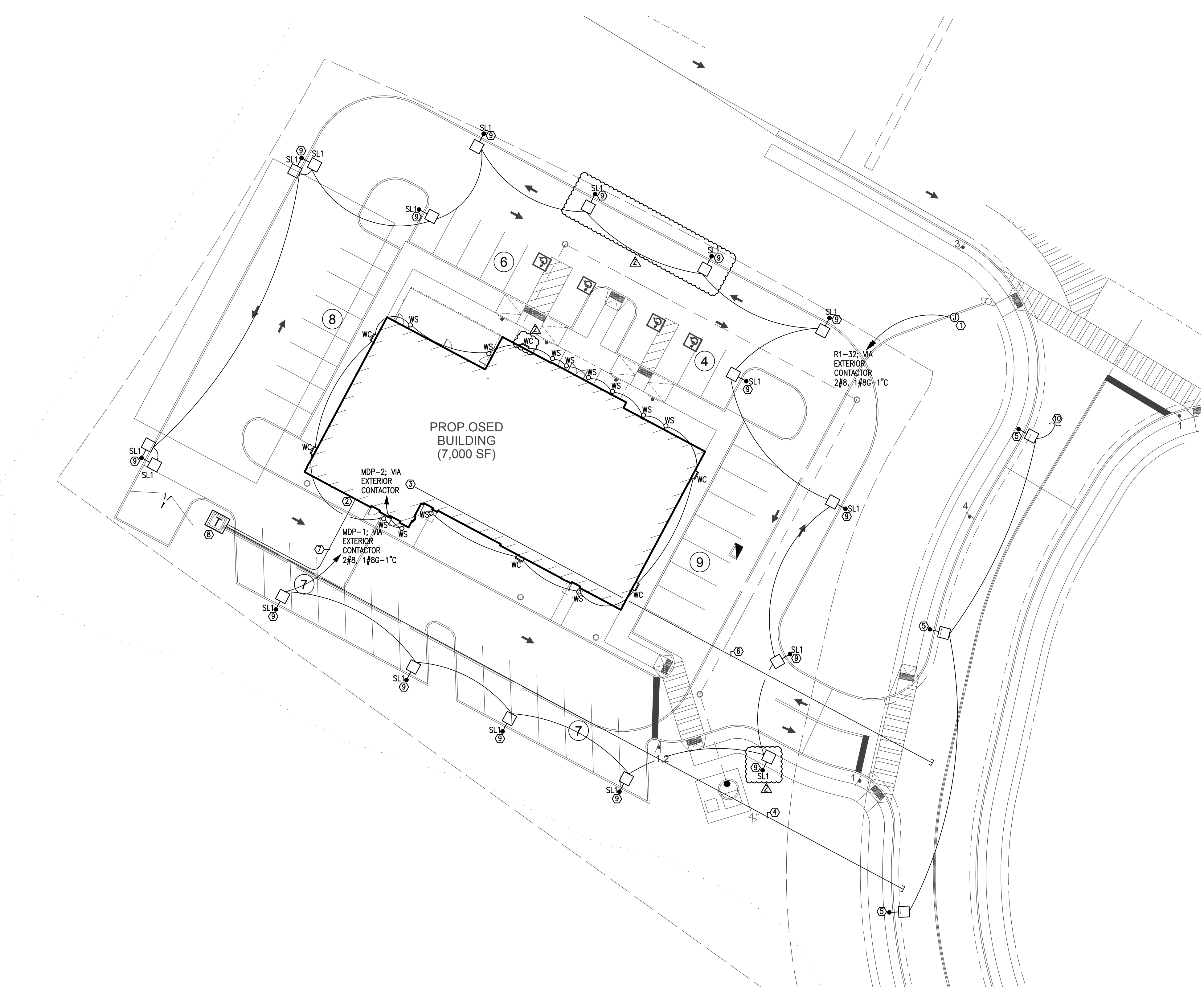
NOTES:
1. REFER TO POLE BASE DETAIL THIS SHEET. COORDINATE FINAL REQUIREMENTS WITH DUKE ENERGY AND CIVIL.
2. PROVIDE WITH 90-MINUTE BATTERY BACKUP WHERE INDICATED ON DRAWINGS. LINEAR FIXTURES SHALL HAVE 600 LUMEN INVERTER. DOWNLIGHTS SHALL HAVE INTEGRAL TEST SWITCH.

- KEYNOTES:**
- MONUMENT SIGN, 120V, 1PH. COORDINATE EXACT REQUIREMENTS WITH SIGN PROVIDER.
 - ELECTRICAL DISCONNECT AND METER. REFER TO ELECTRICAL RISER DIAGRAM, SHEET 1/E001 FOR ELECTRICAL REQUIREMENTS.
 - APPROXIMATE LOCATION OF TELEPHONE BACKBOARD.
 - PROVIDE (2) 4" SCHEDULE 40 PVC CONDUITS. 42" BFG MINIMUM WITH 36" RADIUS ELLS AT TRANSFORMER PAD. COORDINATE EXACT REQUIREMENTS WITH UTILITY.
 - PROVIDE CITY OF SENOIA APPROVED LIGHTING FIXTURE AND POLE.
 - PROVIDE (2) 4"C FOR TELEPHONE/CATV SERVICE. COORDINATE EXACT REQUIREMENTS WITH UTILITIES.
 - SECONDARY CONDUIT AND WIRING PER POWER RISER DIAGRAM.
 - UTILITY PAD MOUNTED TRANSFORMER. COORDINATE FINAL LOCATION WITH CIVIL.
 - EXTERIOR SITE LIGHT. REFER TO POLE BASE DETAIL, THIS SHEET.
 - COORDINATE FINAL CONNECTION OF LIGHT POLES WITH SENOIA UTILITY COMPANY.



2 POLE BASE DETAIL N.T.S.

1 SITE PLAN 1" = 20'-0"



C:\Users\Chris\Dropbox (Westside Engineering)\Westside Engineering Team Folder\2022\22283 - WMG Urgent and Primary - Senoia Greenbuilding - Interior.rvt 6/29/2022 12:40:54 PM

© ALIGN DESIGN ASSOCIATES - ALL RIGHTS RESERVED