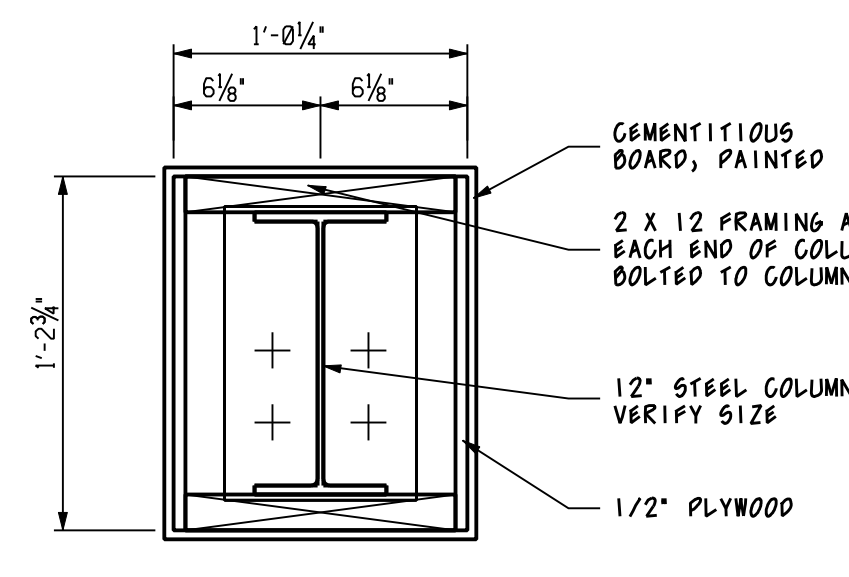
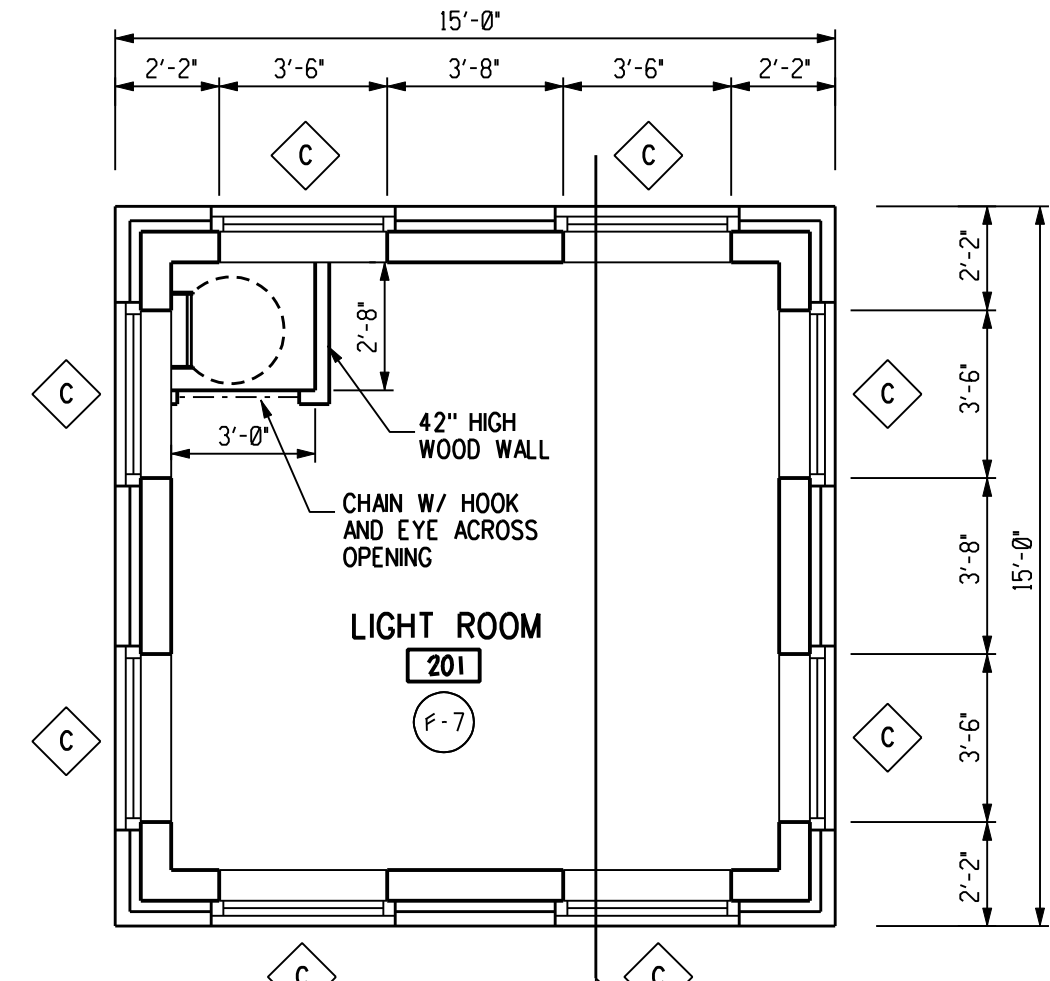


DETAIL 1
A-1
SCALE: 1/2" = 1'-0"



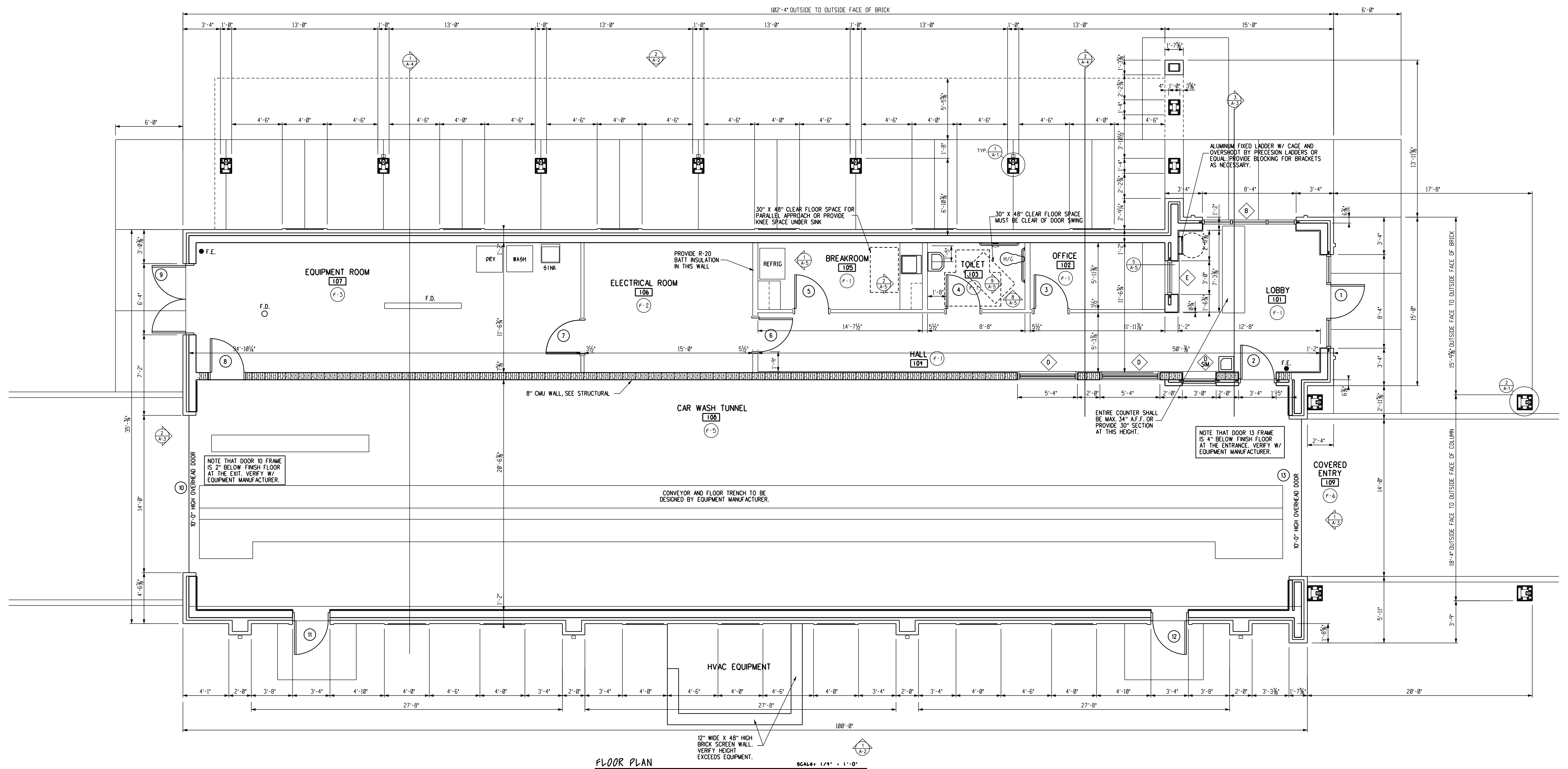
DETAIL 2
A-1
SCALE: 1/2" = 1'-0"



LIGHT ROOM FLOOR PLAN
SCALE: 1/4" = 1'-0"

FINISH SCHEDULE

F-1 FLOOR:	VCT
BASE:	RUBBER
WALL:	GYPSUMBOARD - PAINTED
CEILING:	2 X 2 LAY-IN ACOUSTICAL TILE
F-2 FLOOR:	CONCRETE
BASE:	RUBBER
WALL:	GYPSUMBOARD - UNPAINTED
CEILING:	2 X 2 LAY-IN ACOUSTICAL TILE
F-3 FLOOR:	CONCRETE
BASE:	RUBBER
WALL:	GYPSUMBOARD - FINISHED, NOT PAINTED
CEILING:	CONCRETE BLOCK - NOT PAINTED
F-4 FLOOR:	CONCRETE
BASE:	RUBBER
WALL:	GYPSUMBOARD - FINISHED, NOT PAINTED
CEILING:	CONCRETE BLOCK - NOT PAINTED
F-5 FLOOR:	CONCRETE
BASE:	PANELS AS DETAILED
WALL:	PANELS AS DETAILED
CEILING:	PANELS AS DETAILED
F-6 FLOOR:	CONCRETE - BROOM FINISH
BASE:	BOARD AND BATON SIDING
WALL:	BOARD AND BATON SIDING
CEILING:	OPEN STRUCTURE
F-7 FLOOR:	CONCRETE
BASE:	NONE
WALL:	GYPSUMBOARD - FINISHED, NOT PAINTED
CEILING:	OPEN TO STRUCTURE

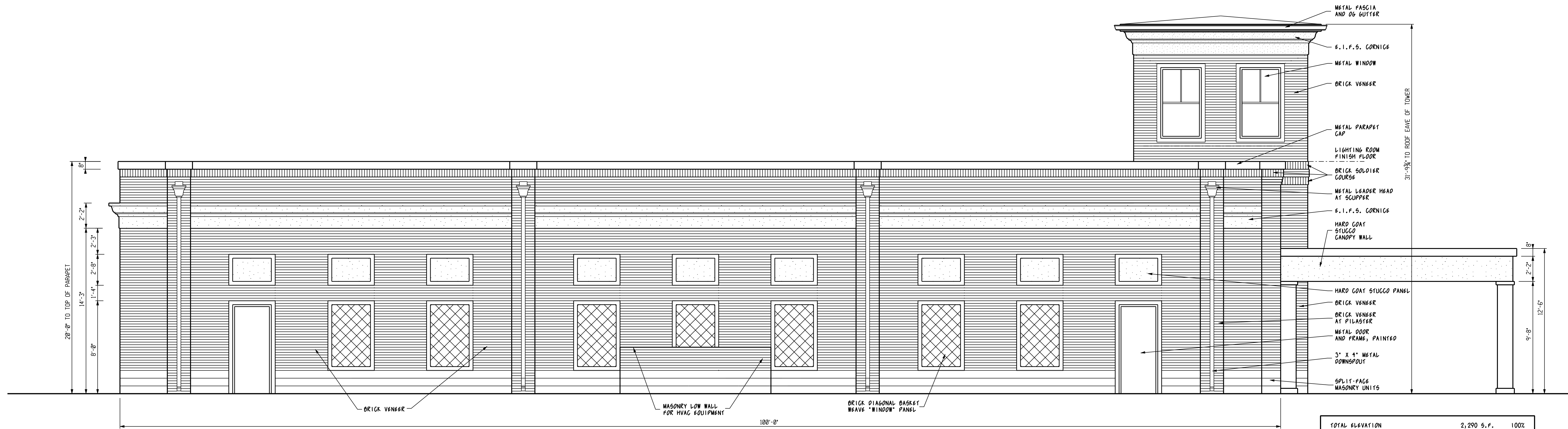


FLOOR PLAN
SCALE: 1/4" = 1'-0"

BIG PEACH CAR WASH
FOR
BIG PEACH PROPERTIES
TUCKER ROAD
SENOIA, GEORGIA 30276

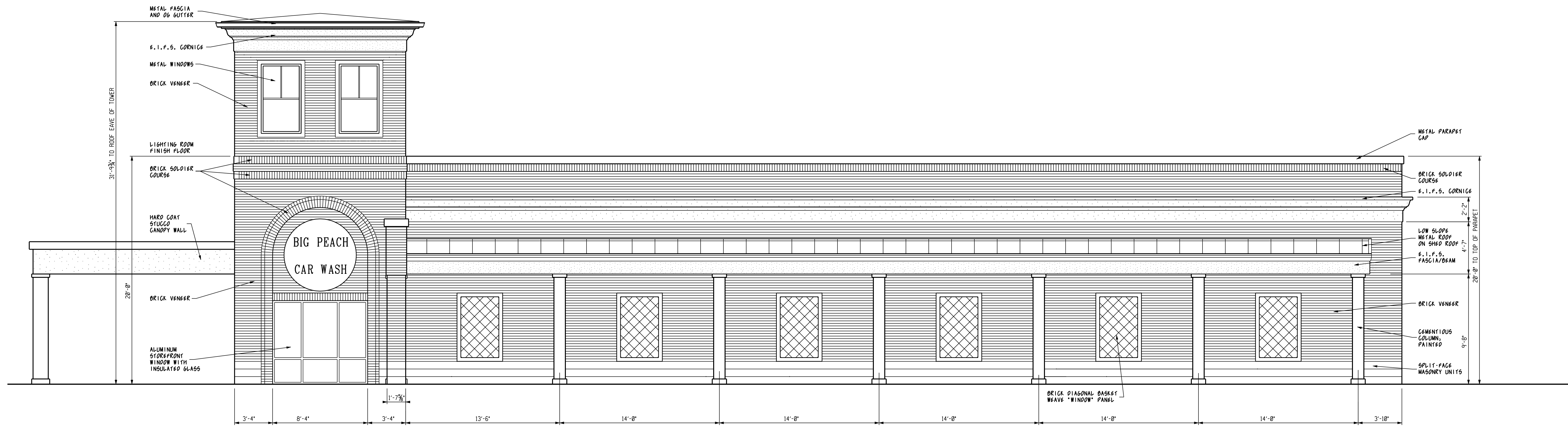
ADAMS and DAY
ARCHITECTS, A.I.A., P.C.
216 ROSE HILL DRIVE, GEORGIA 31088
PHONE: (478) 745 - 1167
roberf.day@cox.net

DRAWING NO.
A-1



1 EAST ELEVATION SCALE: 1/4" = 1'-0"

TOTAL ELEVATION	2,290 S.F.	100%
WINDOWS, FALSE WINDOWS AND OPENINGS	307 S.F.	17%
B.I.F.S. AND CEMENTITIOUS MATERIAL	26 S.F.	1%
B.I.F.S. CORNICE	226 S.F.	10%



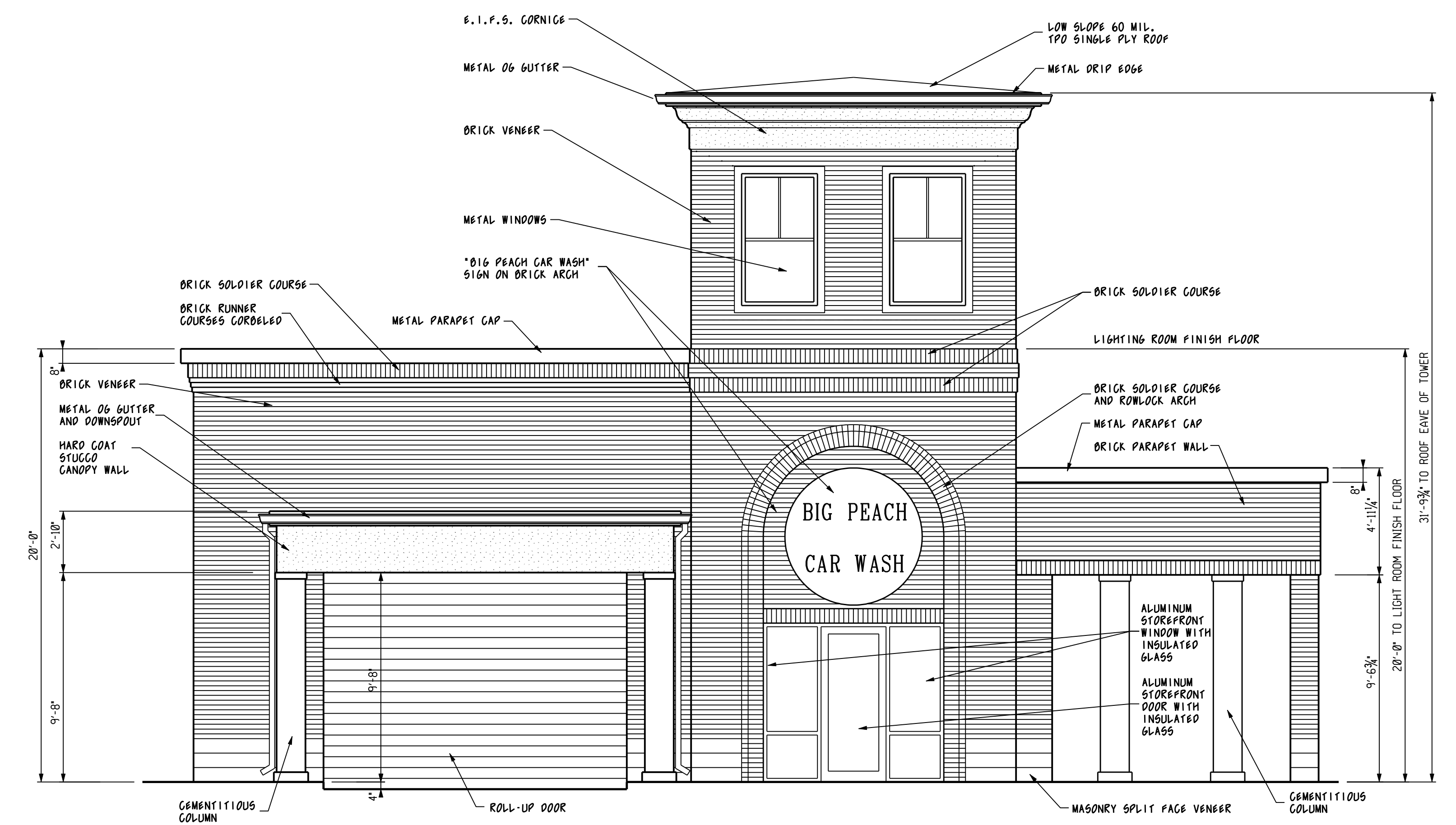
2 WEST ELEVATION SCALE: 1/4" = 1'-0"

TOTAL ELEVATION	2,290 S.F.	100%
WINDOWS, FALSE WINDOWS AND OPENINGS	267 S.F.	12%
B.I.F.S. AND CEMENTITIOUS MATERIAL	169 S.F.	7%
B.I.F.S. CORNICE	219 S.F.	10%

BIG PEACH CAR WASH
FOR
BIG PEACH PROPERTIES
TUCKER ROAD
SENOIA, GEORGIA 30276

DRAWN BY
RAD
CHECKED BY
RAD
DATE
9 - 15 - 23
ADAMS and DAY
ARCHITECTS, A.I.A., P.C.
216 ROSE HILL DRIVE, GEORGIA 31088
PHONE: (478) 745 - 1167
robert.day@cox.net

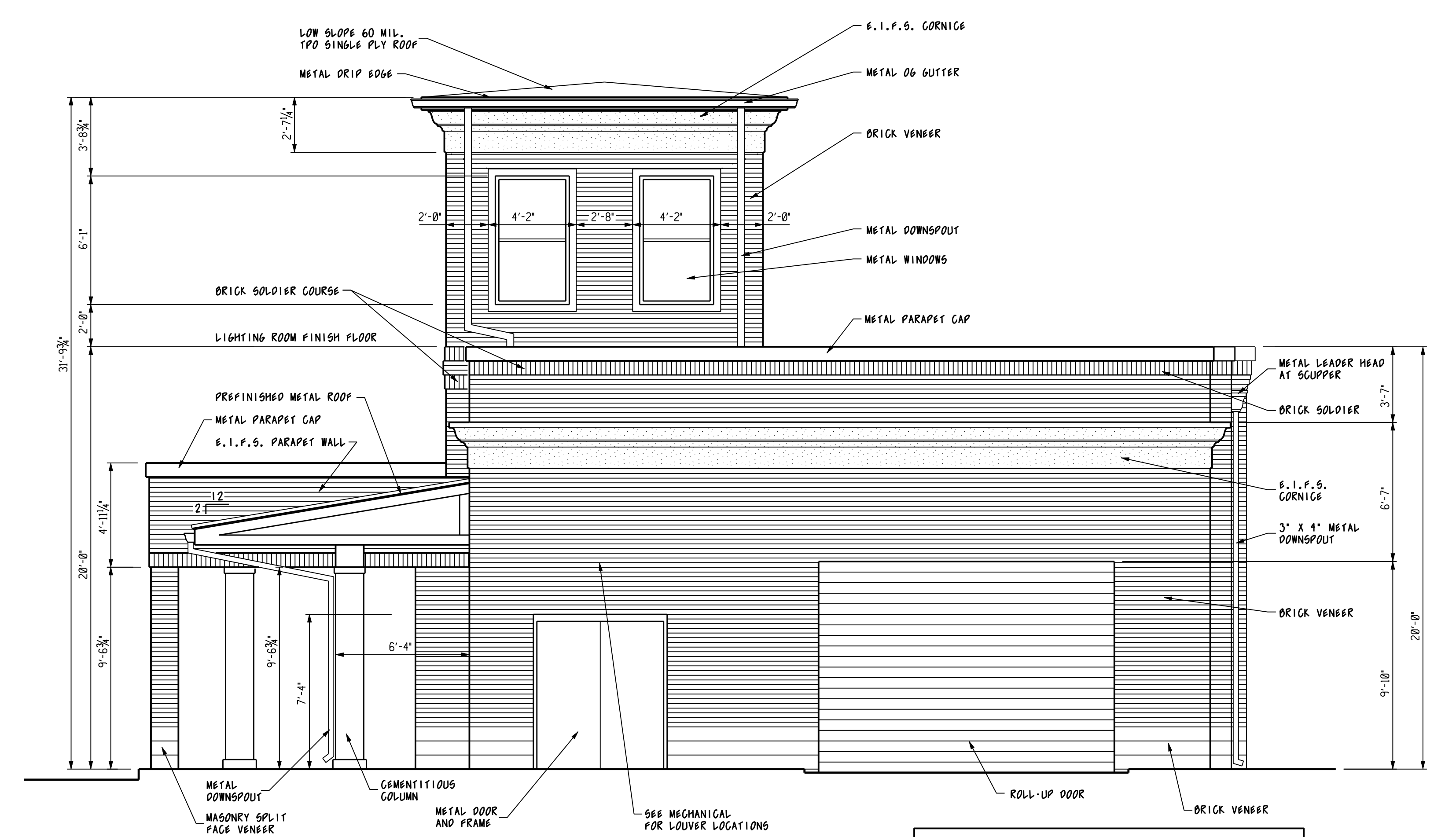
DRAWING NO.
A-2



TOTAL ELEVATION	1,143 S.F.	100%
WINDOWS AND OPENINGS	330 S.F.	29%
F.I.F.S. AND CEMENTITIOUS MATERIAL	52 S.F.	5%
F.I.F.S. CORNICE	30 S.F.	3%

1 NORTH ELEVATION

SCALE: 1/4" = 1'-0"



TOTAL ELEVATION	1,143 S.F.	100%
WINDOWS AND OPENINGS	321 S.F.	28%
F.I.F.S. AND CEMENTITIOUS MATERIAL	51 S.F.	4%
F.I.F.S. CORNICE	107 S.F.	9%

2 SOUTH ELEVATION

SCALE: 1/4" = 1'-0"

<p>BIG PEACH CAR WASH</p> <p>FOR</p> <p>BIG PEACH PROPERTIES</p> <p>TUCKER ROAD SENOIA, GEORGIA 30276</p>	<p>DRAWN BY</p> <p>RAD</p>	<p>ADAMS and DAY</p> <p>ARCHITECTS, A.I.A., P.C.</p> <p>216 ROSE HILL DRIVE, GEORGIA 31088</p> <p>PHONE: (478) 745-1167 robert.day@cox.net</p>	<p>DRAWING NO.</p> <p>A-3</p>
	<p>CHECKED BY</p> <p>RAD</p>		